

/ 20  
20 /

# DESIGN & CONSTRUCT

CAPABILITY STATEMENT



**DESIGNFIT**

DESIGNFIT.COM.AU

# COMPANY PROFILE

Designfit is a Perth based Commercial Design and Construction company working across WA as well as the East Coast of Australia. Our headquarters are located centrally in Osborne Park.

Designfit is owner operated, the managing director and founder is actively available and contributes to each and every project. With over 20 years' experience in the commercial fitout industry, Simon Chester and his team have completed well over 300 projects.

Seeing a need in the market for clients wanting a complete and all inclusive service, Designfit's team encompasses the essential professionals necessary to manage each project comprehensively. Bringing to the industry a multi-disciplinary design, project management and construction service.

From design to completion, we expertly manage the entire construction process. Our team works alongside certifiers and local councils on our clients' behalf to obtain development and building approvals, including the final Certificate of Classification prior to handover.



Our ability to service a wide scope of clients from a range of industries has enabled us to extend our work capabilities and utilise a network of professionals and preferred contractors, ensuring total quality control of projects and building to our exacting standards.

Designfit's project modelling ensures costs are minimised as our designs are completed in-house in consultation with our building experts. This ensures each project is designed cost-effectively from a construction point of view, while still achieving the vision and objectives of the project. Assurance is provided that our proposal and pricing include everything required to get the project completed. Unexpected variations to any project are discussed, reviewed and agreed upon prior to additional works being commenced.

Designfit has an impeccable reputation for honesty, integrity and fair dealing. Our superior service is built on well-respected administrative, design and on-site staff.

Building relationships that last, striving for service excellence and our client's total satisfaction is our priority. Flexible attitudes and transparency are core values of our business and our client's success is our success, both go hand in hand in our opinion.

We look forward to the opportunity to work with you and share your workspace vision.



Kindest regards,  
Simon Chester  
DIRECTOR  
Designfit Group Pty Ltd



**STAND  
OUT  
FROM  
THE  
CROWD**



# CORE COMPETENCIES

## ALL INCLUSIVE SERVICE

We provide a comprehensive design, project management and construction service for clients. As a value add we provide photo realistic 3D renders at each stage of the design process to ensure clients understand the scope and design intent.

We offer a complete turnkey solution with a single point of supply to allow you to get on with what you do best - running your business. As your trusted design, construction and project management service, we manage all trades and processes to ensure optimum outcomes and minimal disruption. All our projects are certified, compliant and we take care of all building permits and development approvals.

## PROJECT SPECIFIC DESIGN SOLUTIONS

Great design is essential to achieve a fully optimised workplace. As work place design experts, we work closely with you to develop an understanding of your exact requirements, how your people work, what your customers expect and all within your budget. We do this in person and in house enabling us to offer custom office designs and advice that is perfectly suited to your business. Our designers, builders and trades are experienced in all aspects of compliance and industry specific standards ensuring your project complies to all HS standards as well as building codes.

## MEETING OUR CLIENTS OBJECTIVES

Designfit understands the importance of stable and consistent project teams to achieve project continuity and excellent outcomes.

We are mindful of the need to ensure there is a significant time commitment to allow us to take the lead in identifying key project issues, assessing and evaluating options and planning the time and cost for delivery to meet our client's objectives.

Our team has a broad range of expertise in both project and construction management as well as urban and commercial design. This range of skills fosters creative and innovative approaches to problem solving and an over all commitment to always deliver what our clients envision and to exceed expectation.





---

# CORE COMPETENCIES

---

## CONDENSED TIME FRAMES AND FLEXIBILITY

As a team we have successfully worked on a multitude of projects that have had complex schedules and tight time frames for deliverables. Flexible attitudes and open communication principals ensure we accommodate even the most sensitive projects. For example, working within existing medical facilities often requires accommodations and health directives that require trades work to strict time frames, schedules and with complex compliance.

We regularly plan our resources to ensure a fast and flexible response time should a project require replacement or additional resources. Well established relationships with suppliers and trades directly benefit projects when delivering on time and to requirements.

Directors are always aware of every team member's direct involvement with a project and can therefore prioritise work as needed to ensure all deadlines are met.

## CONTINGENCY FOR PERSONNEL

The structure of our team is such that it involves the business owners and senior staff from our practice. The risk of staff turnover in this instance is extremely unlikely. We have a number of staff within the office that we can call on should it be required. Due to our forbearance within the construction industry we also enjoy robust longstanding relationships with trusted contract staff who are at our disposal to boost numbers when required.



# CORE SERVICES

+

DESIGN

+

COMMERCIAL FITOUTS

+

COMMERCIAL DE-FITS

+

COMMERCIAL  
CONSTRUCTION

+

FURNITURE &  
PARTITIONING



# SAMPLE FITOUT PROJECTS



**DESIGNFIT**

[DESIGNFIT.COM.AU](https://designfit.com.au)



# EPIROC

Administration building & workshops



Designfit was awarded the tender to redesign and re-fit the administration building, internal spaces and workshop areas within the existing building at Perth Airport.

Works involved detailed review of existing commercial spaces, ergonomic redesign to accommodate increased staff levels as well as to incorporate new branding and break out spaces. Exterior landscaping was included in the project to provide staff recreation opportunities within the property. The fitout was to be simple yet high quality and sought to create a memorable experience for clients and staff.

As a point of difference custom meeting pods were installed. Taking inspiration from the client's own industry plant and equipment, in this case "pit vipers" used in their onsite operations. These were designed and fabricated in house by Designfit and provide a point of interest as well as a useful space during day to day operations.

**CLIENT**

**LOCATION**

**STATUS**

**SIZE**

**EPIROC**

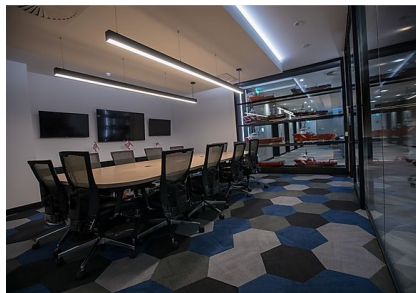
**PERTH AIRPORT  
LANDSIDE**

**COMPLETED  
2019**

**1500SQM PLUS  
SITE WORKS**

# SOLSTAD

## Offices



Designfit was engaged to design and construct the Norwegian Shipping company's central CBD Perth offices. The scope of works required consisted of a complete de-fit of the existing spaces as well as a new design that would encompass new branding, visual interest and ergonomics.

The brief was to create a striking entrance experience that would be both visually pleasing and showcase elements of the company's fleet of ships. Designfit achieved this by custom designing and installing purpose glass shelving to accommodate replica model scale ships of the current Solstad fleet. The shelving creating both visual interest and function, forming one of the boardroom walls.

Further points of interest were created throughout the spaces by way of custom glass office divisions laminated with ocean spray and floor coverings reflective of the continued theme. Break out spaces and end of trip facilities were installed and customised.

**CLIENT**

**LOCATION**

**STATUS**

**SIZE**

**SOLSTAD  
FARSTAD**

**PERTH CBD**

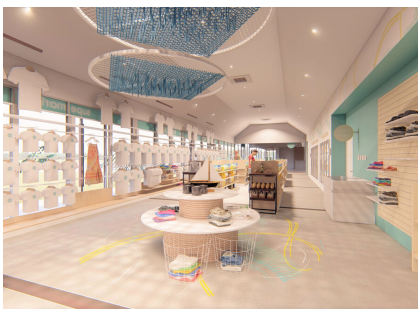
**COMPLETED  
2018**

**890SQM**



# RAC

Travel & motor retail services | Corporate offices | Monkey Mia General store



RAC engaged Designfit in 2017 to assist with the design and construction of various projects as required including new retail spaces throughout WA, the refit of RAC administration buildings as well as the refit of the Monkey Mia Holiday Park General Store building. This relationship is ongoing and works vary according to specific project requirements.

**CLIENT**

**LOCATION**

**STATUS**

**SIZE**

RAC

WA REGIONAL  
AND METRO

ONGOING

VARIABLE



# GRILL'D FREMANTLE & COTTESLOE

Hospitality



Designfit won the contract to de-fit existing restaurant spaces and refit to the design brief provided by the client. Scope of works included demolition and make good of services as well as refitting the floor spaces and eating areas.

CLIENT

LOCATION

STATUS

SIZE



GRILLD



COTTESLOE  
AND  
FREMANTLE



COMPLETED  
2016



100-200SQM

# HAFELE AUSTRALIA

Display offices



Designfit was engaged by Hafele Australia to create a coherent and visually impressive design show space for the German furniture fittings and architectural hardware company.

The scope of works included interior design and construction of the existing space. Utilising the brand's own architectural products provided visual interest and an opportunity to provide in situ experiences for customers.

**CLIENT**



**HAFELE**

**LOCATION**



**OSBORNE PARK**

**STATUS**



**COMPLETED  
2019**

**SIZE**



**250SQM**



# NAO JAPANESE RESTAURANT

Restaurant and commercial kitchens



When Nao Japanese Ramen restaurant relocated their busy kitchen and restaurant in Perth's CBD, Designfit was engaged to complete the project. The scope of works included design and construction of their commercial kitchens, restaurant spaces and all amenities.

The brief was to create a space with an industrial Japanese aesthetic that would also be functional and hardworking. Recycled materials including oregon ceiling beams, concrete floors and industrial light fittings were used alongside glass framed paneling reminiscent of traditional Japanese interiors to create the client's vision.

**CLIENT**

**LOCATION**

**STATUS**

**SIZE**

**NAO JAPANESE  
RESTAURANT**

**PERTH CBD**

**2016-2017**

**145SQM**



# **SAMPLE CONSTRUCTION PROJECTS**



**DESIGNFIT**

[DESIGNFIT.COM.AU](http://DESIGNFIT.COM.AU)



## EPIROC

External portico & outdoor recreation construction



CLIENT

LOCATION

STATUS

SIZE

EPIROC

PERTH

COMPLETED  
2019

80SQM APROX

## AUSTAL SHIPS

Demountable training rooms - ongoing maintenance



CLIENT

LOCATION

STATUS

SIZE

AUSTAL

HENDERSON

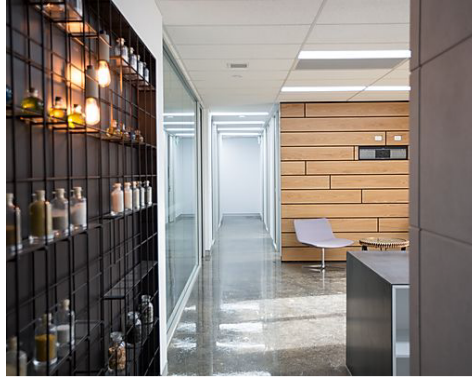
COMPLETED  
2018 - ON  
GOING

N/A



# HANSON

Office construction | Batching plant | Laboratory | Amenities building



## CLIENT

## LOCATION

## STATUS

## SIZE

HANSON  
CEMENT GROUP

PERTH &  
SYDNEY

COMPLETED  
2019

2000SQM  
APPROX

# CORPORATE SOCIAL RESPONSIBILITY

Giving back to our local community is a key element of Designfit's business ethos. Commercial fitout projects are committed to on the basis of community need as well as on an assessment of each project's prospective capacity to attain assistance via the facility's management departments or other stakeholders.

Designfit is fortunate enough to have assisted and contributed to various WA based community groups. In 2019 we contributed to the community Focus Group and design process of Churchlands Primary School naturescape playground, the complete design and fitout of the Parents Lounge and meeting room at King Edward Memorial Hospital's NICU and the National Suicide Prevention and Trauma Recovery Project (NSPTR) new administration spaces, located in Belmont. We maintain an ongoing relationship and provide continued support to the First Nations Homeless Project and Advocacy Service (FNHPAS) as well as the the NSPTR.

Community involvement and making meaningful contribution to reconciliation is an integral part of the Designfit culture and we will continue to prioritise areas of the community that need local business involvement.

## CHURCHLANDS PLAYGROUND



## NICU PARENT LOUNGE





# LETTERS OF RECCOMENDATION



**DESIGNFIT**

DESIGNFIT.COM.AU



Epiroc

Epiroc Australia  
19 Reid Road  
Perth International Airport  
WA 6105

---

Freecall: 1300 366 880  
[www.epiroc.com.au](http://www.epiroc.com.au)

---

Epiroc Australia Pty Ltd  
ABN: 70 000 086 706

---

July 24, 2019

To Whom it May Concern:

In early 2018 Epiroc Australia appointed "Designfit Interiors" as the successful bid to design and construct the internal fit-out of our brand-new Epiroc's Australian Head Office together with our Service Centre Workshop located at 19 Reid Road, Perth Airport, Western Australia.

From the very first meeting, the Epiroc project team felt confident to have selected a company that understood Epiroc's vision and was willing to work with us to provide a first-class office layout.

Simon and his team at Designfit Interiors are fantastic to work with and always willing to go the extra mile to deliver an outstanding result, offering a service beyond all expectation.

The Designfit Interiors team is exceptionally qualified and work with a high level of safety standard, all while providing the project on time and within our tight budget constraints.

I highly recommend Simon and the Designfit Interiors team to any business seeking a reliable and trustworthy partner who can provide a first-class office fit-out.

A handwritten signature in blue ink, appearing to be "Terry Browne", with a stylized flourish at the end.

Regards

Terry Browne

General Manager

Epiroc Australia Pty Ltd



26 July 2019



**BEATING  
BLOOD  
CANCERS  
WITH LOVE,  
SWEAT &  
TEARS.**

To whom it may concern

Office Fit Out for the Leukaemia Foundation

The Leukaemia Foundation was introduced to Designfit in 2017. At the time, we were in the early stages of planning an office relocation, which required a full design and fit out of the new space in Innaloo.

Designfit were successful in their tender and subsequently we worked with them in 2018 when they undertook the full detailed design and fit out of our new office space.

We found Designfit to be reliable, professional and very supportive throughout the whole project. They not only understood our needs and parameters from a design, budget and timeframe perspective, but were also able to empathise with our cause and mission.

Through continued effective engagement and communication from Designfit, the project ran smoothly and was delivered on time and on budget.

We are delighted with our new office space and thank Designfit for their input and assistance with this project.

Yours sincerely

A handwritten signature in black ink, appearing to be "Peta", followed by a long, horizontal, wavy line that ends in a small loop.

Peta Greening  
WA State Representative  
Leukaemia Foundation



30<sup>th</sup> July 2019

To Whom it May Concern

Early in 2018 we worked with DesignFit during a "false start" to design and construct an open office collaborative environment. Later that year, with new premises secured, DesignFit Interiors were the successful bidders to construct and fit out Arjo's new offices in Canning Vale.

The team were awarded the contract due to the structured proposal, an innovative yet collaborative design approach and willingness to work with a number of different parties. We found they executed the brief very well resulting in a fantastic new office environment that has only had positive comments from the staff.

The project had a number major third party challenges which the team at DesignFit including Simon, Justin & Elena managed extremely well and resolved to our satisfaction.

The quality of the workmanship was first class and the onsite team were extremely professional and polite.

I would recommend DesignFit to any prospective business wishing to ensure their project is a positive experience following a quality design, construction and fit out process.

A handwritten signature in black ink, appearing to read "Craig Roddy", is located below the recommendation text. The signature is fluid and cursive, with a long horizontal stroke extending to the right.

Craig Roddy

Director – Finance

South East Asia Pacific





---

DesignFit Interiors was selected by SolstadFarstad Pty Ltd to complete a turnkey project for the new office location following a large company merger in Solstad Offshore in late 2017/early 2018. The initial preparation scope included conceptual space plan design, 3D visualisation and detailed architectural drawing and specifications for a complete floor in Perth CBD prior to detailed costing for the construction works.

The entire project was carried out through a main holiday period and was completed very successfully on plan and within budget. The level of professionalism and creative adaption presented by the entire DesignFit team was a credit to all and we would have no hesitation in providing the highest recommendation to any future Clients.

DesignFit was always receptive to looking for the most cost effective and efficient solution to any management of change that came up through the project and were a pleasure to deal with.

---

Solstad Offshore ASA  
Asia Pacific

Phillip B. Stewart  
Managing Director

15<sup>th</sup> September 2016

To whom it may concern,

This letter is written to express our complete satisfaction with the services provided by DesignFit Interiors as we have undertaken various building projects together across Australia since 2006.

The building services and quality of workmanship provided by DesignFit Interiors have been conducted in a professional manner, within predetermined time constraints, for a very reasonable fee.

The Director of DesignFit Interiors, Simon Chester, provided an array of building solutions and proposals from which to choose throughout the development process, which made the resulting product perfectly suited to our particular needs.

We have received numerous compliments from management and staff who have been involved in the process and have appreciated the ease in which the building works were conducted, with minimal disruption to the business. We intend to continue building our business relationship with DesignFit Interiors in providing the ideal solution for our Company.

Simon Chester has demonstrated the ability to lead his team on a construction site in a diligent manner. His leadership and communication skills have ensured any issues faced onsite have been overcome with no delay to the project timeframe and budget. Simon has time and again proven himself as an industrious builder who prides himself on delivering a quality product.

I would strongly recommend Simon and his team to any prospective client, as I believe they would be a valuable asset to any building project.

Please feel free to contact me if you would like any further information regarding our working relationship with DesignFit Interiors.

Kind regards,

Collin Ryan



Collin Ryan

Project Manager ANZ

Baxter Healthcare Pty Ltd

1 Baxter Drive / Old Toongabbie, NSW 2146 / Australia

T +61.2.8845.1517 / M +61.419.555.134

[collin\\_ryan@baxter.com](mailto:collin_ryan@baxter.com)



**26 October 2016**

## **To Whom it May Concern,**

Hanson has completed a number of commercial re-fit and refurbishments within the past 3 years. Our introduction to DesignFit was during a 900m2 refit of our head office, and have since employed Simon Chester and his team to complete other projects such as an additional 165m2 in the head office, a new 65m2 operational office, de-fit of another large regional office and many other site refurbishments. Simon and his team were responsible for design compliance, materials procurement and fitout, electrical, plumbing and other services and all representatives of DesignFit have maintained a high level of safety, attention to detail and professionalism.

DesignFit have also been employed to design a new 510m2 greenfield office building for an operational site. The team have displayed a great understanding for our needs and provide the right balance between cost and quality for our business which has been a refreshing change from previous experiences. It is due to the above reasons that Hanson continues to use DesignFit as a preferred supplier for commercial fitout within Western Australia, and as a Project Manager, I also recommend them as easy to get along with, reliable, consistent and professional.

Yours faithfully

**Hanson Construction Materials Pty Ltd**



**NATHAN VIVIAN**  
**PROJECT MANAGER - WESTERN REGION**

27 September 2017

To whom it may concern,

This letter is written to express our satisfaction with the services provided by DesignFit Interiors throughout the Cedar Woods Properties Perth office refurbishment in early 2017.

The DesignFit Interiors team showed a high level of professionalism, organisation and expertise in several aspects of the office refurbishment. With particular regard to their ability to meet deadlines in a compressed build schedule, which was completed over the Christmas break. The team went over and above to deliver the project to a high standard in a short period of time to ensure that no down time was incurred by Cedar Woods Properties.

Simon Chester, Director of DesignFit Interiors demonstrated a high level of understanding in office refurbishments and interior design. Providing cost saving solutions where appropriate without sacrificing the overall deliverability and high standard of the refurbishment.

Tim Chester, demonstrated a high level of project management skills and understanding of construction standards, methods and safety.

I would strongly recommend Simon and the DesignFit Interiors team to any prospective clients considering their engagement. In particular for projects with deliverability issues such as restrictive deadlines.

Please feel free to contact me if you would like to discuss our experiences with the DesignFit team.

Kind regards,



**Ben Rosser**  
State Manager  
Cedar Woods Properties



**DESIGNFIT**

# COMPANY DETAILS

## PRIMARY CONTACT

Name: Simon Chester  
Position title: Managing Director - Founder  
Email address: [simon@designfit.com.au](mailto:simon@designfit.com.au)  
Mobile Phone: 0413 158 201

## PRIMARY DETAILS

Trading Name: Designfit Group  
Company Name: Designfit Group Pty Ltd  
ABN: 62616063300  
Licence: BC 102109  
Legal Structure: Limited Company  
Postal Address: PO Box 1634, Osborne Park Perth WA 6916  
Location Address: 47 Walters Drive, Osborne Park Perth WA  
Website: [www.officefitoutspertth.com.au](http://www.officefitoutspertth.com.au)

## CAPABILITIES & CAPACITY

Services: All aspects of commercial design and construction  
Facilities: Fully equipped fabricating workshop  
Equipment: Associated construction plant & equipment  
Software/Systems: Lumion, Sketch Up CAD, XERO, Photo Shop  
Area Served: Perth and regional WA, Sydney

## INSURANCE & PUBLIC LIABILITY

Legal Liability \$20,000,000.00  
Professional Indemnity  
\$5,000,000.00

/ 20  
20 /

**SPEAK TO US AND EXPERIENCE  
THE DIFFERENCE.**

**We provide a free consultation  
and estimate as part of our  
process to allow us to help you  
get your project underway.**

**We'd love to hear from you.**



**DESIGNFIT**

**DESIGNFIT.COM.AU**